

Helping transform the

higher education

community



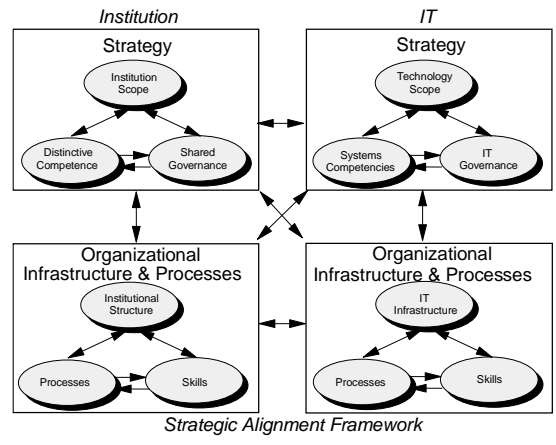
MORAN TECHNOLOGY CONSULTING

IAM Assessment Framework

The Moran Technology Consulting (MTC) IAM Assessment Framework is optimized for higher education, builds upon international information security standards, and leverages InCommon’s Trusted Access Platform (TAP) Reference Architecture to assess and improve our clients’ IAM programs: governance, operations, business processes, architecture, and technology.

➤ Strategic Alignment

We believe that the success or failure of technology investments is based on an institution’s ability to strategically align its technology resources with its strategic goals and drivers. To be transformative, IAM programs need to better leverage and focus investments in technology on its strategic goals.

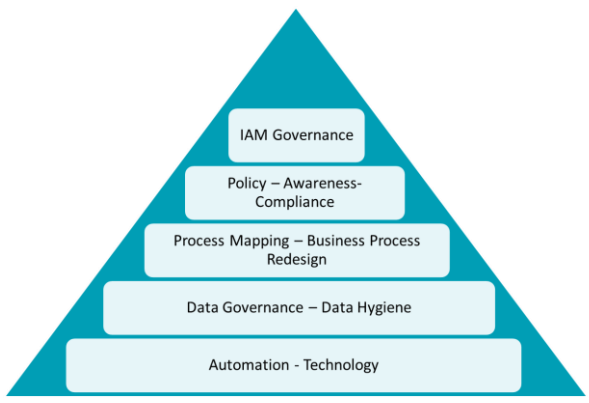
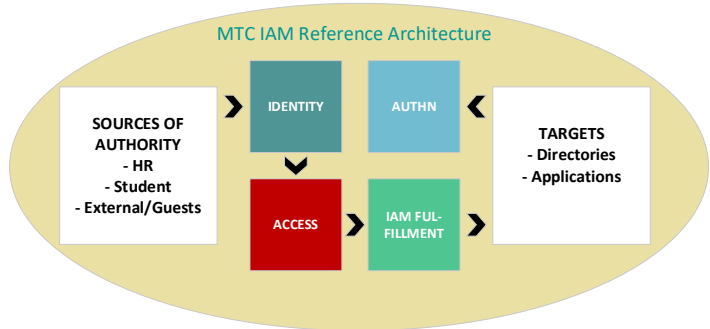


➤ ISO/IEC & NIST Standards

Our framework utilizes the functional categories and standards from ISO/IEC and NIST functional pillars for IAM: Identity Management, Access Management, and Authentication & Assurance.

➤ TAP Reference Architecture

The MTC IAM Assessment Framework borrows from and builds upon InCommon’s Trusted Access Platform (TAP) Reference Architecture.



➤ Transformational IAM Programs

Our strategic plans empower our clients to build transformational IAM programs with continuous improvement to: governance, business processes, operations, architecture, and technology

We invite you to view our client mug shots – we enjoy our projects and our clients!

<http://www.morantechnology.com/clients/mugs/>



IAM Assessment Framework

Our approach is collaborative. *We consult with you and not at you, using proven methodologies to provide pragmatic recommendations that fit your requirements, budget, and culture.*

We have worked with nearly three hundred (300) universities and colleges and are proud to invest in and partner with organizations that help higher education institutions to address the tactical and strategic issues that they face. Our partnerships and sponsorship investments include:



MTC and Cirrus Identity partner to support higher education and research institutions' efforts to improve their identity and access management programs. Cirrus Identity offers innovative cloud identity management solutions – the Swiss army knife of cloud hosted tools for secure login.



MTC is proud to be a Gold Corporate Partner of EDUCAUSE. This group is focused on advancing higher education through the use of information technology.



MTC is a corporate member of Internet2 and Catalysts member. The Catalysts support community efforts to improve identity and access management for research and higher education.

<https://incommon.org/community/catalyst/>



As the premier partner of Identity Automation for higher education our identity consultants partner with Identity Automation's technical services, product, and support teams to implement complex identity governance solutions for higher education.



MTC is a founding corporate member of IDPro. IDPro exists to globally foster ethics and excellence in the practice and profession of digital identity. For more information see: www.idpro.org



Based upon our skills, experience, and customer references, MTC is a Microsoft Silver Partner for Cloud Productivity. We leverage years of experience designing and implementing Microsoft Identity solutions.



MTC consultants leverage years of experience designing and implementing identity governance solutions to deploy SailPoint's industry leading and native cloud (SaaS) identity governance solution - SailPoint IdentityNow.